

Operator
Telephone
Fax
e-Mail

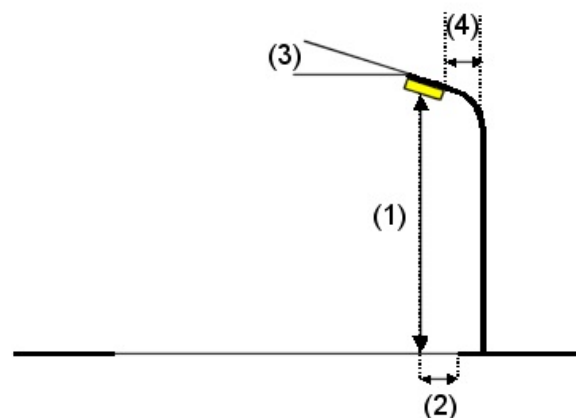
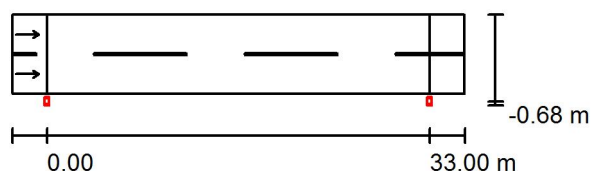
Street 1 / Planning data

Street Profile

Roadway 1 (Width: 6.800 m, Number of lanes: 2, tarmac: R3, q0: 0.070)

Maintenance factor: 0.80

Luminaire Arrangements



| | |
|----------------------------|--------------------|
| Luminaire: | PHILIPS SGS102 MR |
| Luminous flux (Luminaire): | 7530 lm |
| Luminous flux (Lamps): | 10700 lm |
| Luminaire Wattage: | 114.0 W |
| Arrangement: | Single row, bottom |
| Pole Distance: | 33.000 m |
| Mounting Height (1): | 8.304 m |
| Height: | 8.000 m |
| Overhang (2): | -0.600 m |
| Boom Angle (3): | 15.0 ° |
| Boom Length (4): | 1.000 m |

Maximum luminous intensities

| | |
|---------|------------|
| at 70°: | 192 cd/klm |
| at 80°: | 88 cd/klm |
| at 90°: | 23 cd/klm |

Any direction forming the specified angle from the downward vertical, with the luminaire installed for use.

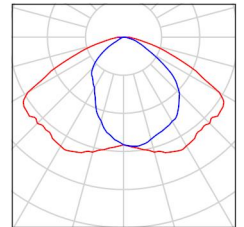
Arrangement complies with luminous intensity class G2.
Arrangement complies with glare index class D.6.

Operator
Telephone
Fax
e-Mail

Street 1 / Luminaire parts list

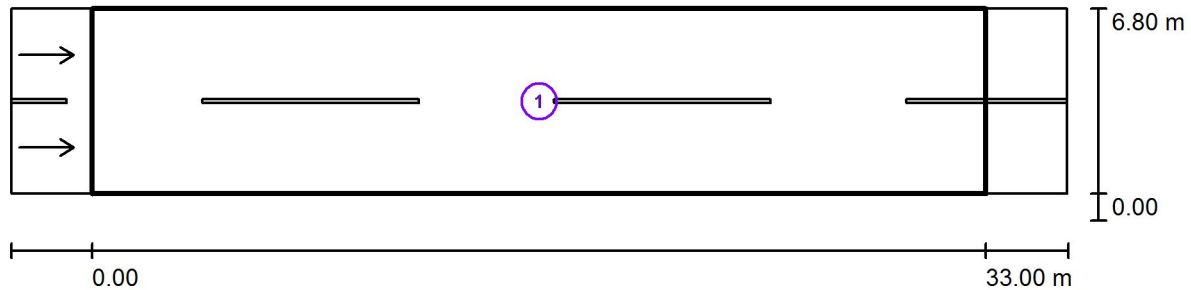
PHILIPS SGS102 MR
Article No.:
Luminous flux (Luminaire): 7530 lm
Luminous flux (Lamps): 10700 lm
Luminaire Wattage: 114.0 W
Luminaire classification according to CIE: 100
CIE flux code: 47 81 97 100 70
Fitting: 1 x SON-TPP100W/220 (Correction
Factor 1.000).

See our luminaire
catalog for an image of
the luminaire.



Operator
Telephone
Fax
e-Mail

Street 1 / Photometric Results



Maintenance factor: 0.80

Scale 1:279

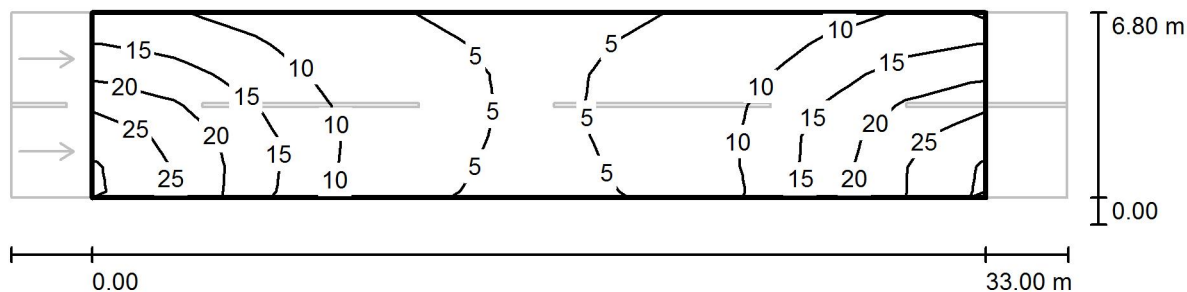
Calculation Field List

- 1 Valuation Field Roadway 1
Length: 33.000 m, Width: 6.800 m
Grid: 11 x 6 Points
Accompanying Street Elements: Roadway 1.
tarmac: R3, q0: 0.070
Selected Lighting Class: ME5

(All lighting performance requirements are met.)

| | L_{av} [cd/m ²] | U0 | UI | TI [%] | SR |
|-------------------------------------|-------------------------------|-------------|-------------|-----------|-------------|
| Calculated values: | 0.61 | 0.42 | 0.45 | 10 | 0.65 |
| Required values according to class: | ≥ 0.50 | ≥ 0.35 | ≥ 0.40 | ≤ 15 | ≥ 0.50 |
| Fulfilled/Not fulfilled: | ✓ | ✓ | ✓ | ✓ | ✓ |

Operator
Telephone
Fax
e-Mail

Street 1 / Valuation Field Roadway 1 / Isolines (E)

Values in Lux, Scale 1 : 279

Grid: 11 x 6 Points

 E_{av} [lx]
12 E_{min} [lx]
3.77 E_{max} [lx]
28 u_0
0.322 E_{min} / E_{max}
0.135