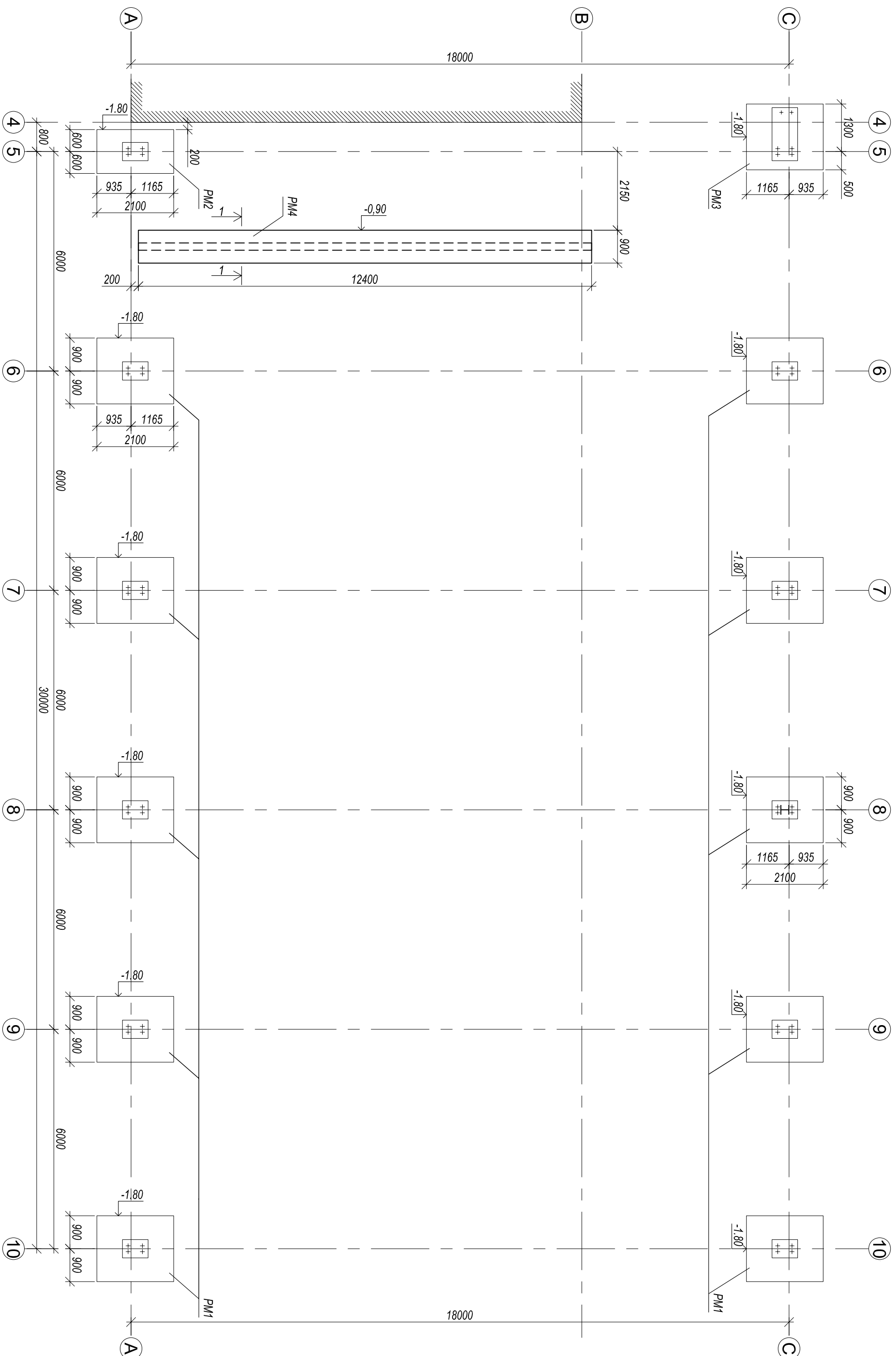
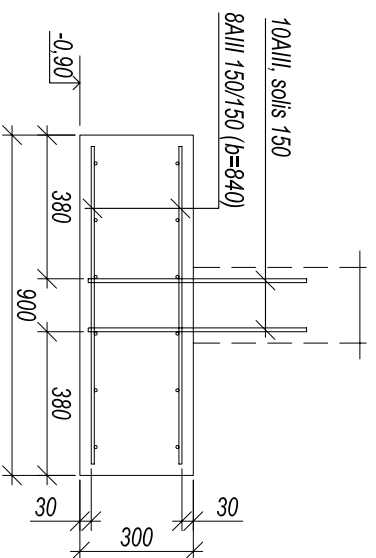


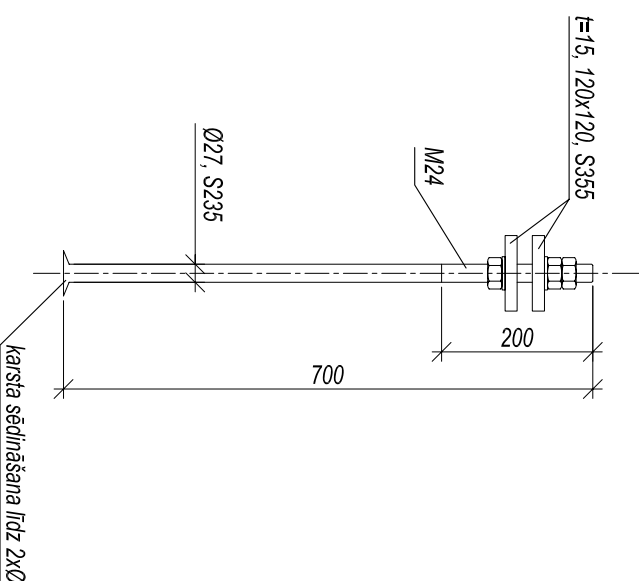
Pamatu plāns
M1:100



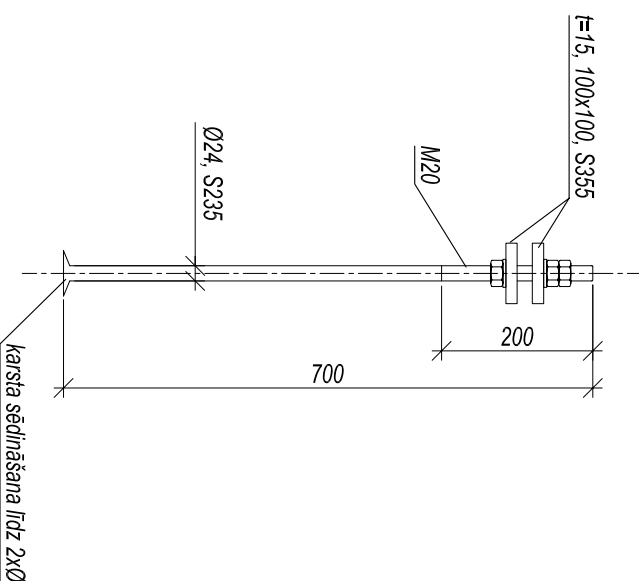
1-1
M1:20




Enkurs EB24
M1:10



Enkurs EB20
M1:10



Pamata elementu specifikācija					
Marka, poz.	Apozīmējums	Nosaukums	Skais	Vien. masa	Piezīmes
PM1	BK2	<u>Monolitais pamats PM1:</u>	10		
	FOCT 5781	st./siets 14AIII/150/150 (1740x2040)	1	63,6	
	FOCT 5781	st./siets 8AIII 150/150 (1740x2040)	1	20,8	
	FOCT 5781	20AIII, L=1280	6	3,2	
	FOCT 5781	8AIII, L=2400	6	0,95	
	FOCT 5781	8AIII, L=250	15	0,10	
		Enkurs EB24	4	5,9	
PM2	LVS156	Betons C12/15	1,51		m3
	BK2	<u>Monolitais pamats PM2:</u>	1		
	FOCT 5781	st./siets 14AIII/150/150 (1740x2040)	1	42,9	
	FOCT 5781	st./siets 8AIII 150/150 (1740x2040)	1	14,0	
	FOCT 5781	20AIII, L=1280	6	3,2	
	FOCT 5781	8AIII, L=2400	6	0,95	
	FOCT 5781	8AIII, L=250	12	0,10	
		Enkurs EB24	4	5,9	
	LVS156	Betons C12/15	1,13		m3
PM3	BK2	<u>Monolitais pamats PM3:</u>	1		
	FOCT 5781	st./siets 14AIII/150/150 (1740x2040)	1	42,9	
	FOCT 5781	st./siets 8AIII 150/150 (1740x2040)	1	14,0	
	FOCT 5781	20AIII, L=1280	12	3,2	
	FOCT 5781	8AIII, L=2400	6	0,95	
	FOCT 5781	8AIII, L=250	12	0,10	
		Enkurs EB24	4	5,9	
	LVS156	Betons C12/15	1,13		m3
PM4		<u>Monolitais pamats PM4:</u>			
	FOCT 5781	st./siets 8AIII 150/150 (b=840)	2	65,2	
	FOCT 5781	10AIII, L=600	180	0,24	
	LVS156	Betons C12/15	1,82		m3
		Enkurs EB24	4	5,9	
		Enkurs EB20	2	4,2	
		LVS156	Betons C12/15	1,82	
	LVS156	Betons C12/15	3,51		m3

 <div>SIA LK projekta grupa Raiņa 10-1, Daugavpils, LV-5401</div>	SIA "Jēkabpils reģionālā slimnīca" reģ. Nr. 50003356621			BP-15-13		
	Katlu mājas rekonstrukcija, Andreja Pomajaļa ielā 125, Jēkabpilī					
	Pamata plāns.			Strādāja	Lapa	Lappas
				TP	BK1	-
Izstrādāja	S. Belovs	M 1-100	Reģ.Nr.			